

Start

$7 \times 20 =$

$3 \times 50 =$

$9 \times 40 =$

$7 \times 60 =$

$4 \times 80 =$

$6 \times 60 =$

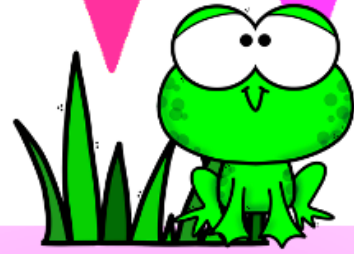
$4 \times 40 =$

$9 \times 50 =$

$7 \times 90 =$

$3 \times 60 =$

$9 \times 30 =$



Speler 1



Speler 2



320

270

360

140

560

180

630

420

240

320

240

450

560

360

180

160

140

160

$8 \times 30 =$

$2 \times 90 =$

$8 \times 70 =$

$6 \times 20 =$

$3 \times 40 =$

$2 \times 80 =$